



PROFESSIONAL
LED LIGHT SYSTEM

Examination Light

Luvis-E100



Luvis-E100

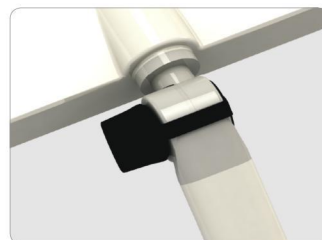
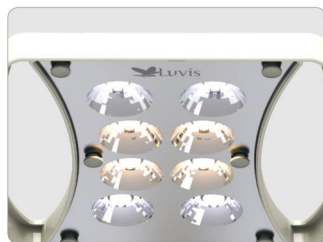
EXAMINATION LED Light for Various Medical Field

Simple, Clear and Affordable

Luvis Examination LED Light, E-100, delivers clear light, cool LED lighting with an slim design for all of your exam and minor procedure needs.

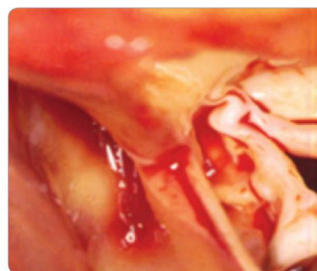


- ❑ High level of illumination intensity : 60,000 lux at 0.5 m
- ❑ 17cm focal size
- ❑ 3 Steps of Intensity control
- ❑ Accurate color rendering $R_a > 95$
- ❑ 3 steps of Color temperatures control (3500 K, 4000K, 4500 K)
- ❑ Easy to use , simple control unit on the head
- ❑ Low maintenance cost
- ❑ Lowest heat emission and no UV from the light

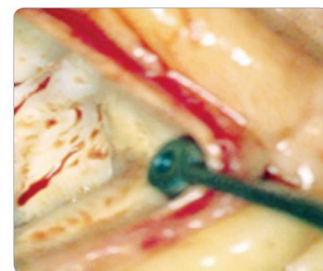


Clear and Natural - Highest color rendering for a variety examination

95Ra of Highest Color rendition index with adjustable color temperature offer clear and natural color rendering. E100 will help to distinguish the small nuance of color and may help to prevent unexpected mistake from distorted color delivery.



Luvis-E100



Lower CRI

Wider user - Adjustable intensity and Color temperature.

Through intuitive control panel user easily can adjust the intensity and color temperature in 3steps. Adjustable E100 can be adopted in various scene of medical field



3,500K



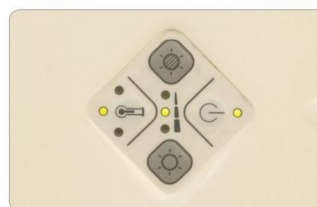
4,000K



4,500K

Easy to install and Use

Simplified way of installation and intuitive control panel offers easy to use



Safe - Cool Light No emission of UV

Lowest level of heat emission will not prompt drying up of wounds while the treatment or experiment Also no UV emission which accelerating of skin aging.

Eco-Lower power consumption

Less than 20W of power consumption and 5years of LED life will save the cost and hassled job of maintenance

Technical Data	
Illumination Ec at 0.5m working distance	60,000 Lux
Color Rendering Index	Ra 95
	R9 90
Color Temperature	3,500K/4,000K/4,500
Illumination Field Size	17cm
Dimming Range	50% ~ 100%
Radiant Energy	3.2 mW/m2lx
Irradiance	192 W/m2
Head Size	25cm x 24.6cm
Power consumption	<20 W





Professional Medical Illumination



from DENTIS Co., LTD

DENTIS is a company specialized in medical devices that started from dental implants and provides professional medical devices, equipment and service such as medical LED Light. LUVIS is flagship brand of DENTIS.

In 2011, Medical LED Lighting industry relied on imports. However, DENTIS successfully localized dental LED Lights for the first time in Korea. In 2012, launching medical LED Lights, DENTIS has been supplying LED Lights to diversified medical field such as plastic surgery, dermatology, obstetrics and gynecology, ophthalmology as well as dental. With strong power on engineering and Quality Control System, all of LED lighting products are being provided as high quality products in the domestic market and will lead the global medical market.

Ultimate goal of Luv is providing optimal environment that protects the doctor's eyes and patient's health at the same time by utilizing high CRI technology. As providing optimal environment, DENTIS is not going to neglect to get customer's needs, and we promise to do our best to deliver valuable products and service to our client with all of our wisdom and passion.



Head Office www.dentis.co.kr
99, Seongseo-ro, Dalseo-gu, Daegu, Korea
Tel 053-582-2804 / Fax 053-583-2806

Seoul Office
286, Beotkot-ro, Geumcheon-gu, Seoul, Korea

Overseas Branch
U.S.A +1-323-677-4363~5
Taiwan +886-2-2808-5933

Overseas Sale Team eng.luv@dentis.co.kr
Junkim / Asia Pacific, CIS, India
Tel +82-2-3477-2898 / E-mail junkim@dentis.co.kr

Alice Lee / North America, South America
Tel +82-2-3477-2898 / E-mail alice@dentis.co.kr

Alex Lee / Europe, Africa, Middle East
Tel +82-2-3477-2898 / E-mail alexlee@dentis.co.kr